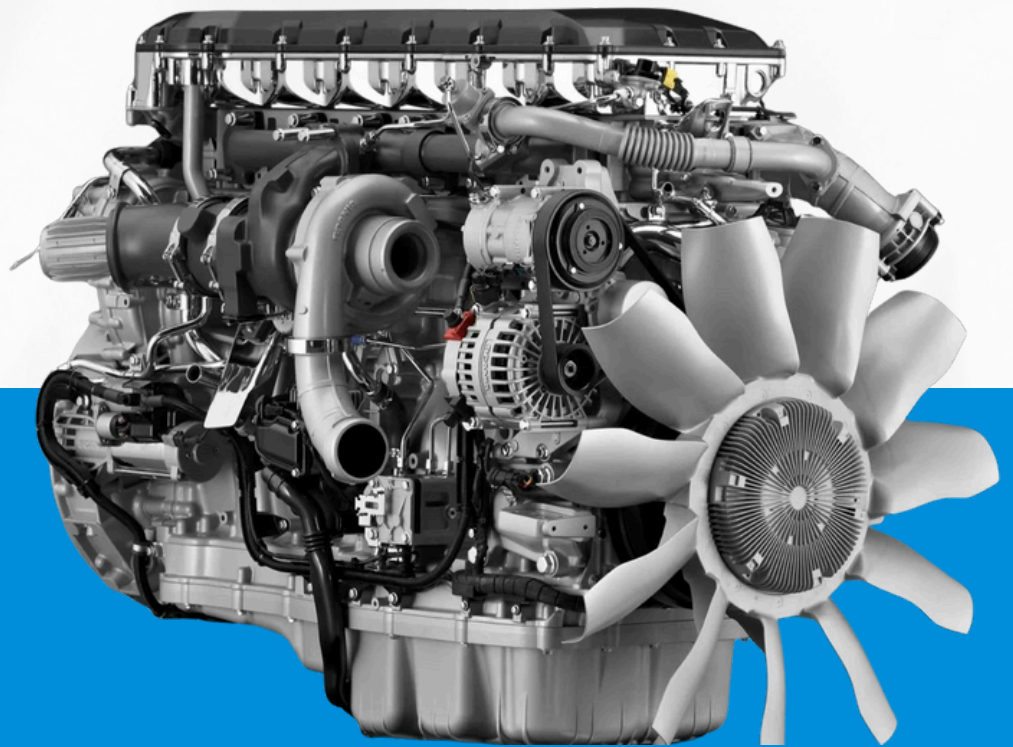


## **USER-MANUAL: 2015 FORD MUSTANG GT PREMIUM ENGINE MANUAL**

**SAFE HANDLING, INSPECTION,  
AND MAINTENANCE TIPS**



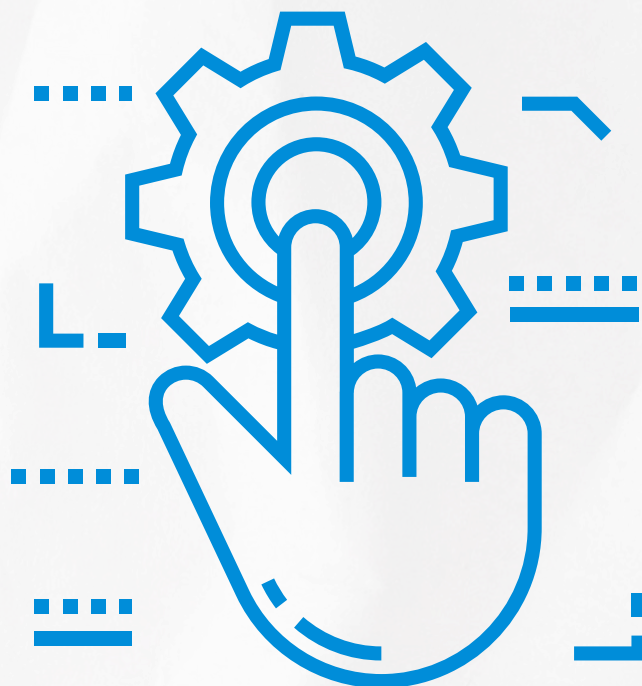
Published by:  
[carengineguru.com](http://carengineguru.com)

# TABLE OF CONTENTS

1. Introduction
2. Engine Overview
3. Safety Guidelines for Handling
4. Visual and Mechanical Inspection Checklist
5. Storage Precautions before Installation
6. Basic Engine Maintenance Schedule
7. Fluids, Filters, and Torque Specifications
8. Signs of Wear or Damage
9. Maintenance Tools and Supplies
10. Long-Term Care Tips
11. Troubleshooting Common Engine Issues
12. Contact & Support

## 1.Introduction

This manual is created to assist you with the proper handling, inspection, and maintenance of the 5L V8 engine which is found in the 2015 Ford Mustang GT Premium. This guide will help to ensure safety, reliability, and performance; whether you are working with an original or a replacement engine.





## 2. Engine Overview

- **Engine Type:** 5L Coyote engine
- **Horsepower:** 435 hp
- **Fuel Type:** Premium
- **Engine Code:** Typically 'P'

This engine uses a twin independent variable camshaft timing and aluminium block construction.



## **3.Safety Guidelines for Handling**

- Before performing any engine work, you need to disconnect the vehicle's battery.
- Always use hoist and lifted tool while moving the engine.
- When handling components wear the gloves and protective eyewear.
- If the engine is installed in the vehicle, you need to work on flat and stable surface with wheel chocks.
- If running diagnostics or starting the engine indoors, make sure there is proper ventilation.

## 4. Visual and Mechanical Inspection Checklist

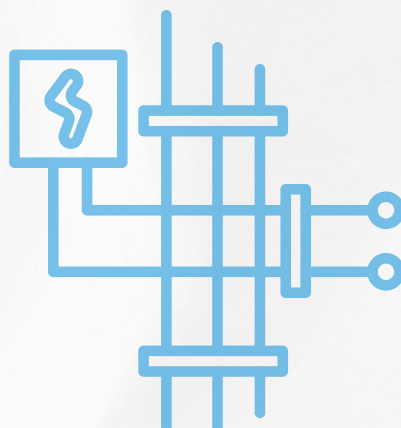
Go through with his checklist before installing the engine:

- **Exterior:** No oil residue around the vehicle and under the hood
- **Gaskets and Seals:** No visible cracks and rust
- **Hoses and Belts:** Should not be brittle or frayed
- **Mounting Points:** No signs of damage
- **Spark Plugs:** Clean and dry, correct gap
- **Oil Condition:** Should not contain metal shavings or coolant
- **Coolant Ports:** Free of rust or residue

## 5.Storage Precautions before Installation

If the engine is not being installed immediately:

- Store in a dry and enclosed space away from direct sunlight
- Use a secure stand to keep it off the ground
- Seal all the open ports with plastic caps
- Rotate the crankshaft frequently to prevent internal rust
- Cover the engine using heavy-duty plastic sheet





## 6. Basic Engine Maintenance Schedule

Task	Interval
Engine Oil & Filter	5K miles or 6 months
Air Filter	5K miles
Spark Plugs	60K miles
Coolant	100K miles or 5 years
Drive Belt	30K miles
PCV Valve	50K miles

Use Motorcraft or equivalent OEM-recommended parts and fluids.

## 7.Fluids, Filters, and Torque Specifications

- **Oil Type:** full synthetic
  - **Oil Capacity:** 8.5 quarts
  - **Coolant:** Motorcraft Orange
  - **Oil Filter Torque:** 18 lb-ft
  - **Spark Plug Torque:** 15 lb-ft
  - **Drain Plug Torque:** 19 lb-ft
- 

To prevent from thread damage or part failure, do not over tight the components.



## 8. Signs of Wear or Damage

**Keep an eye out for:**

- **Knocking Sounds:** May indicate bearing or piston issues
- **White Exhaust Smoke:** Possible head gasket leak
- **Rough Idle:** Could be vacuum leak or spark issue
- **Low Oil Pressure:** Check pump and internal bearing wear
- **Check Engine Light :** Scan for specific diagnostic trouble codes using OBD-II scanner

Routine inspections help catch early issues before they become serious.



## 9. Maintenance Tools and Supplies

### **Recommended tools:**

- Torque wrench Engine hoist and stand
- Oil catch pan
- Spark plug gap tool
- OBD-II scanner
- Clean rags, nitrile gloves, and brake cleaner

Having the correct tools prevents injury and ensures accurate service.

## 10. Long-Term Care Tips

- Warm up the engine gently before high RPM driving
- Avoid over-revving or engine lugging
- Change oil before winter or long-term storage
- Use only OEM-quality fluids and filters
- Log service dates and parts replaced for future reference

# 11.Troubleshooting

## Common Engine Issues

Problem	Likely Cause
Engine won't start	Faulty crank sensor, fuel delivery issue, ignition coil
Overheating	Thermostat stuck, low coolant, clogged radiator
Loss of power	Dirty air filter, fuel pressure loss, misfiring cylinder
Oil leak	Worn gaskets, loose filter, damaged pan
Engine vibration	Faulty mounts, unbalanced components

Always start with a scan tool and visual inspection before removing parts



## **12. Contact & Support**

**If you need help with your 2015  
Mustang GT Premium engine  
or need a replacement:**

**Website:**

**[www.carengineguru.com](http://www.carengineguru.com)**

